

SERIES INT (Intersectional Chairs)

Post-tension cable and rebar



INT 1.5" - STACK

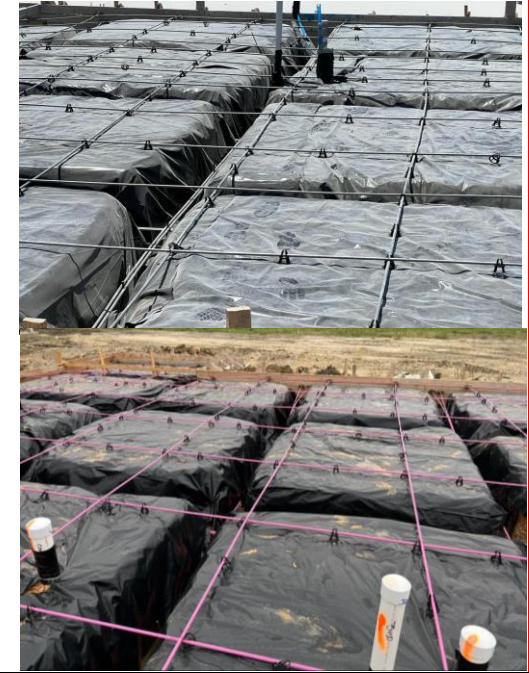
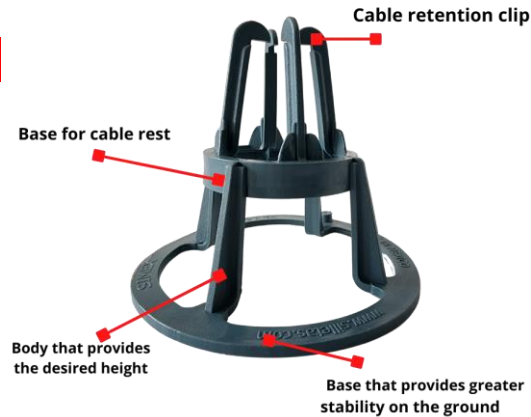
PRODUCT DESCRIPTION

Intersectional chair for post-tension cable and rebar, designed to keep the cable or rebar in the required position according to the structural calculation. Horizontal chair that guarantees great stability.

SPECIFICATIONS

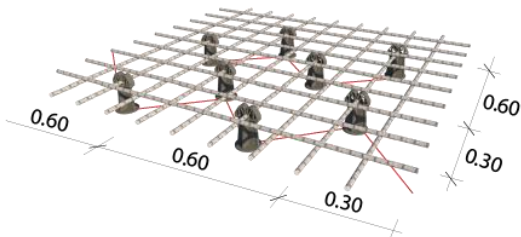
- Compressive strength 550 lb/in² (determined by means of a press for quality control in the factory). This load is considered for the distribution of pieces in the area to be fitted.
- Pieces made of 100% post-industrial polypropylene, under injection process.
- 100% waterproof and inert product; does not react with the concrete and prevents cracks.
- Optimal operation under extreme temperatures (-23°F to 131°F).

Technical information



Installation instructions

The separation between saddles can be from 0.60yd to 1.00yd. An approximate average of 3 pieces per yd².



Transport and storage

You must protect the product from the sun and rain.



ORDER INFORMATION

Reference:	INT 1.5" STACK
Height to fit (in):	1.5
Steel gauge:	Up to #5 (5/8")
Units per package:	100
Bags per pallet	364
Units per pallet	36.400
weight per piece (lb)	0.0309
weight per package (lb)	3,69

IN STOCK TODAY
DISTRIBUTED BY:

